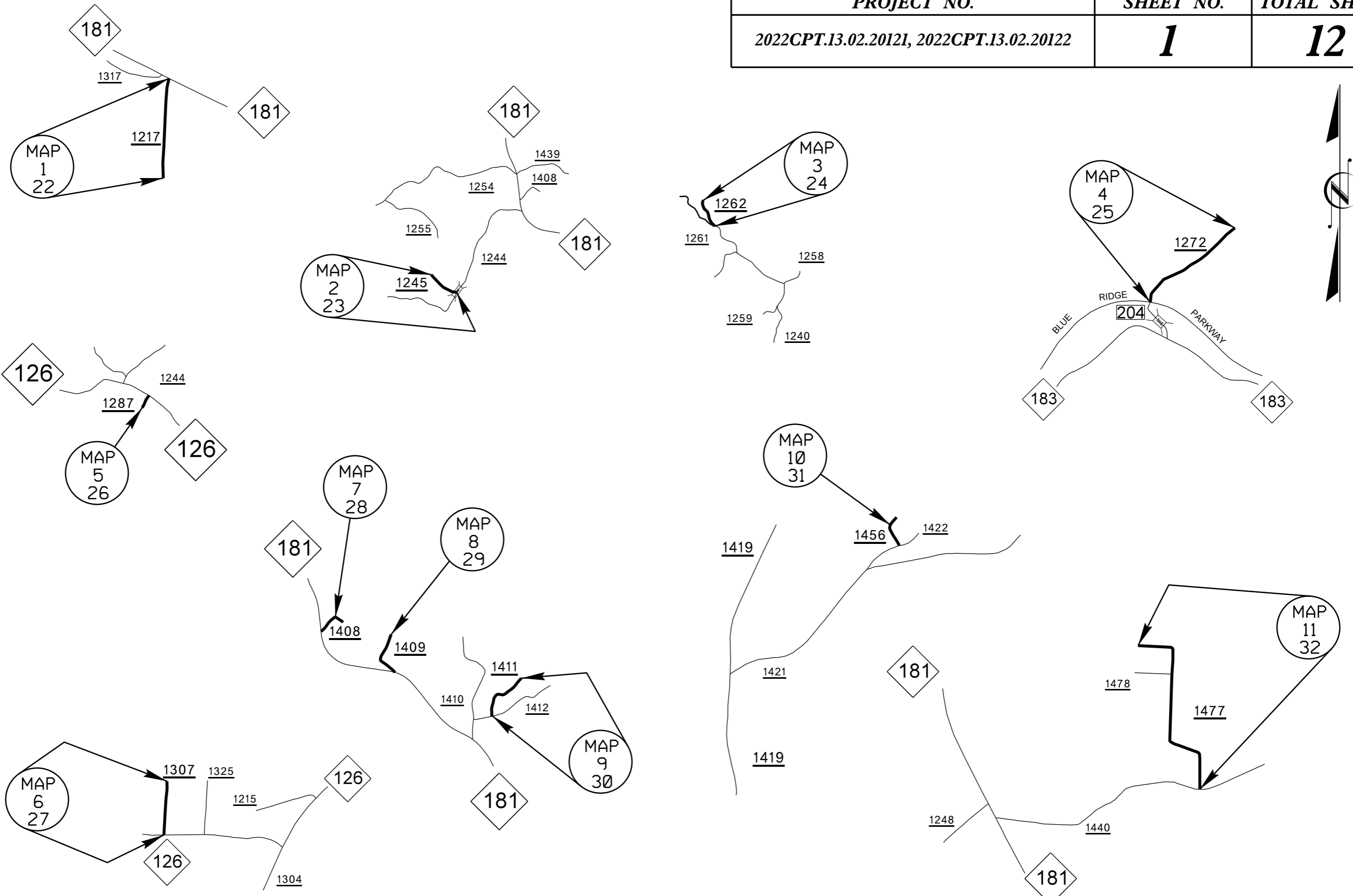
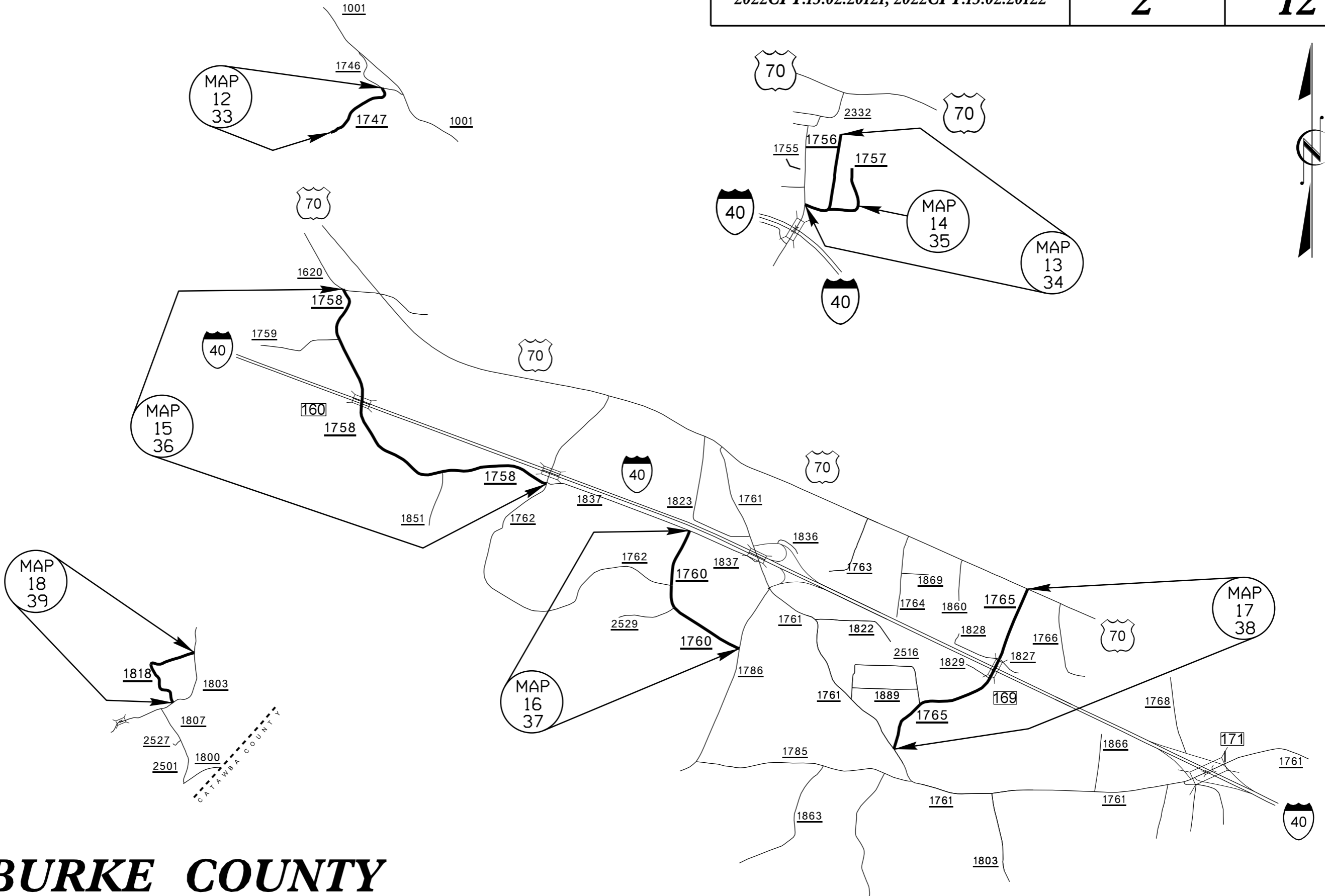


PROJECT NO.	SHEET NO.	TOTAL SHEETS
2022CPT.13.02.20121, 2022CPT.13.02.20122	<b>1</b>	<b>12</b>



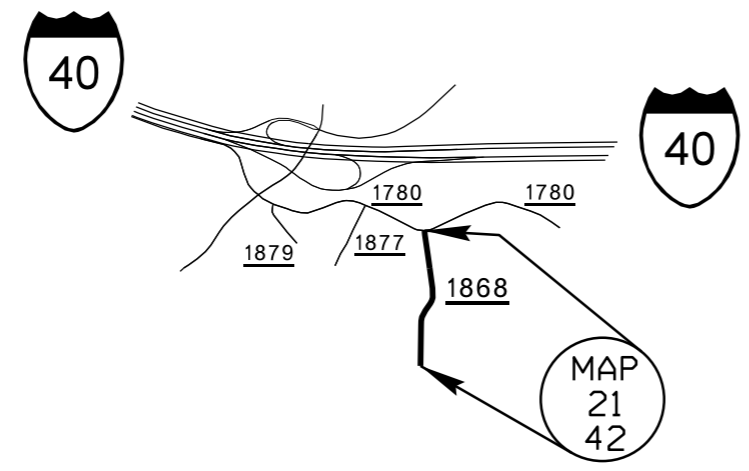
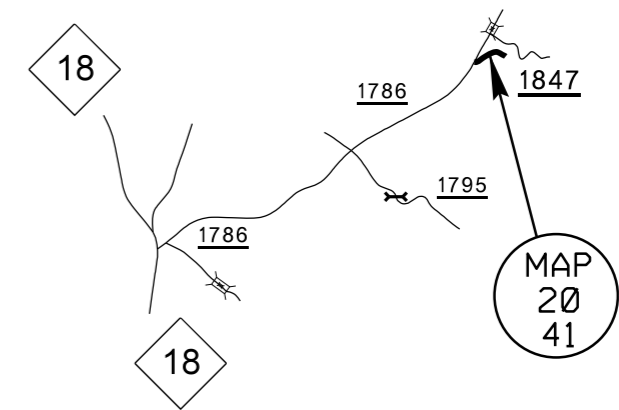
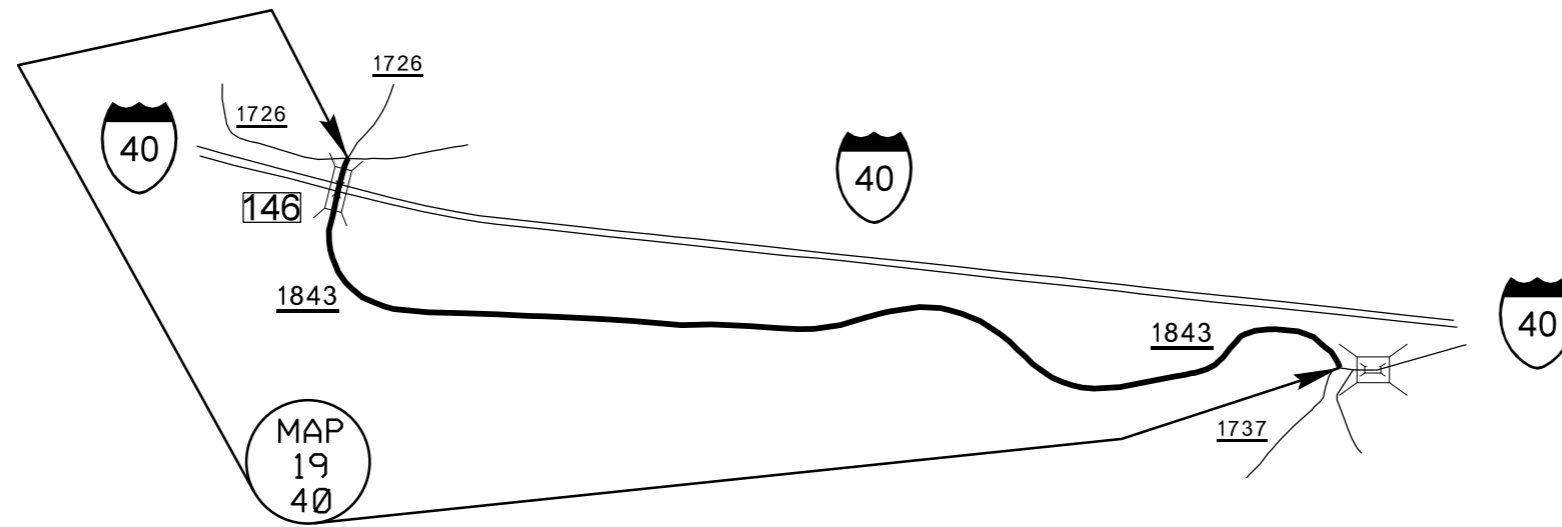
**BURKE COUNTY**

PROJECT NO.	SHEET NO.	TOTAL SHEETS
2022CPT.13.02.20121, 2022CPT.13.02.20122	2	12



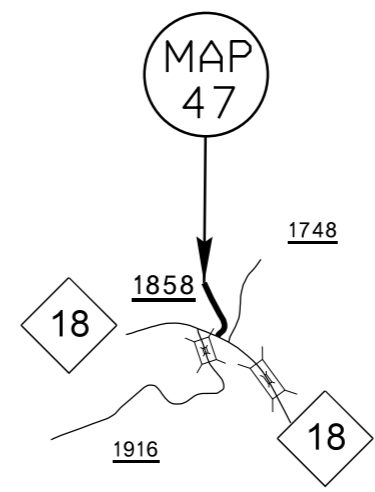
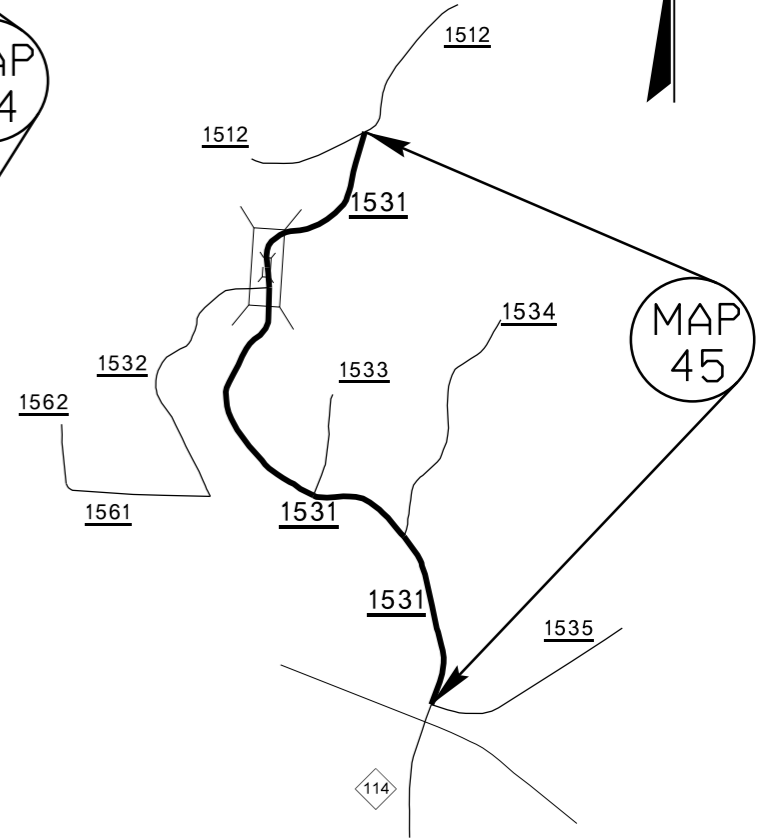
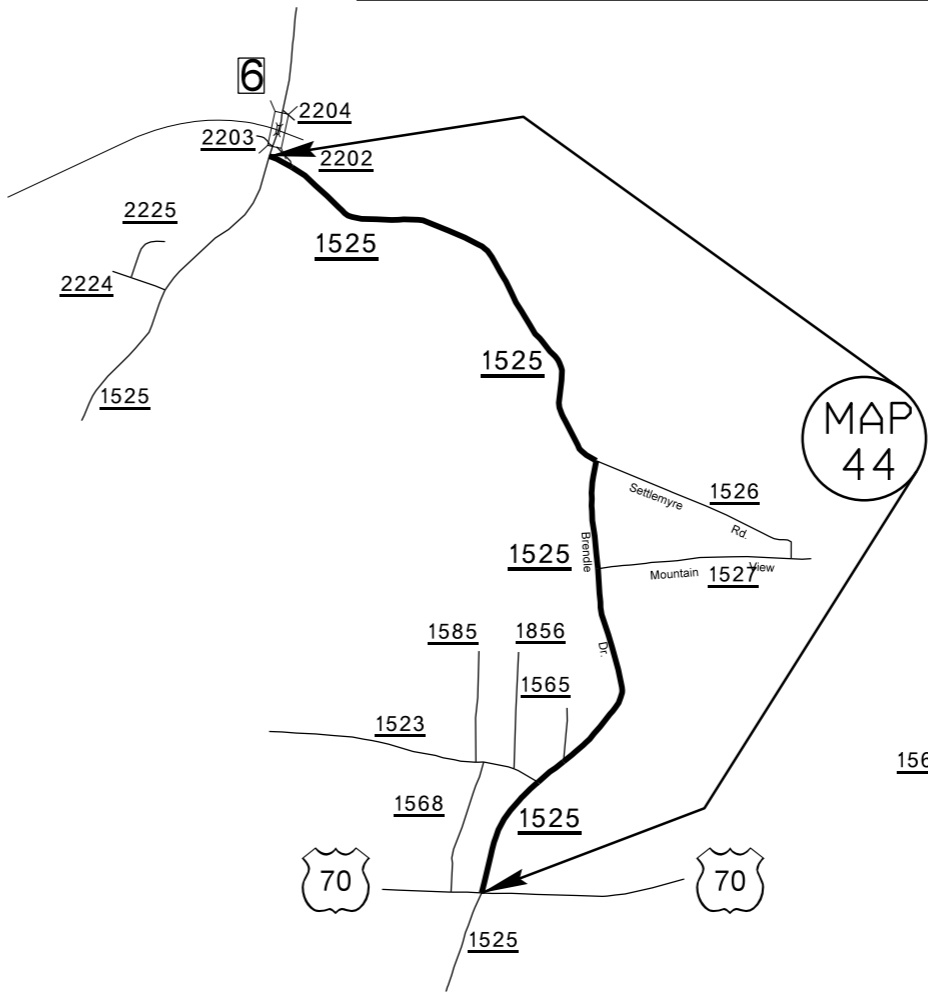
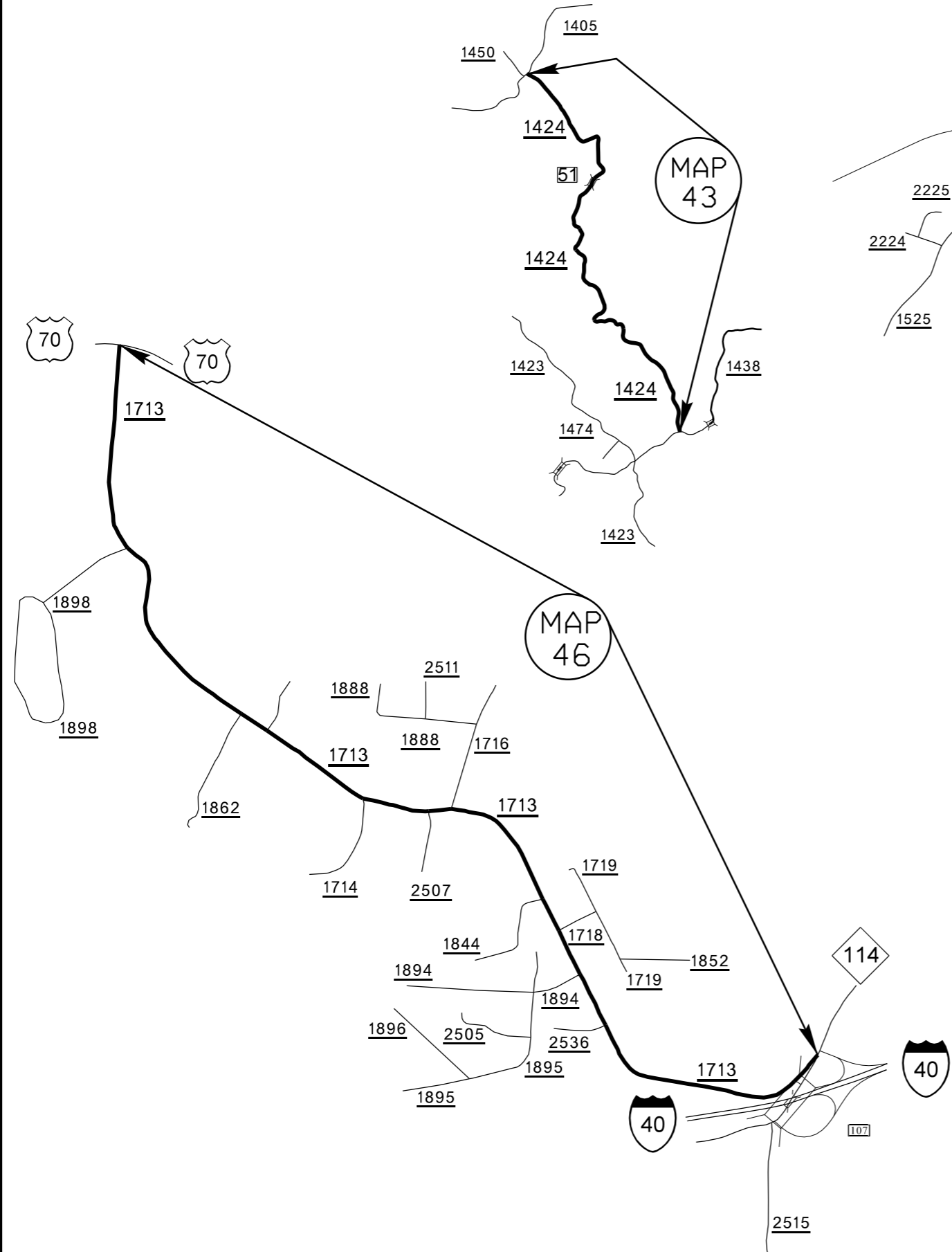
**BURKE COUNTY**

PROJECT NO.	SHEET NO.	TOTAL SHEETS
2022CPT.13.02.20121, 2022CPT.13.02.20122	3	12



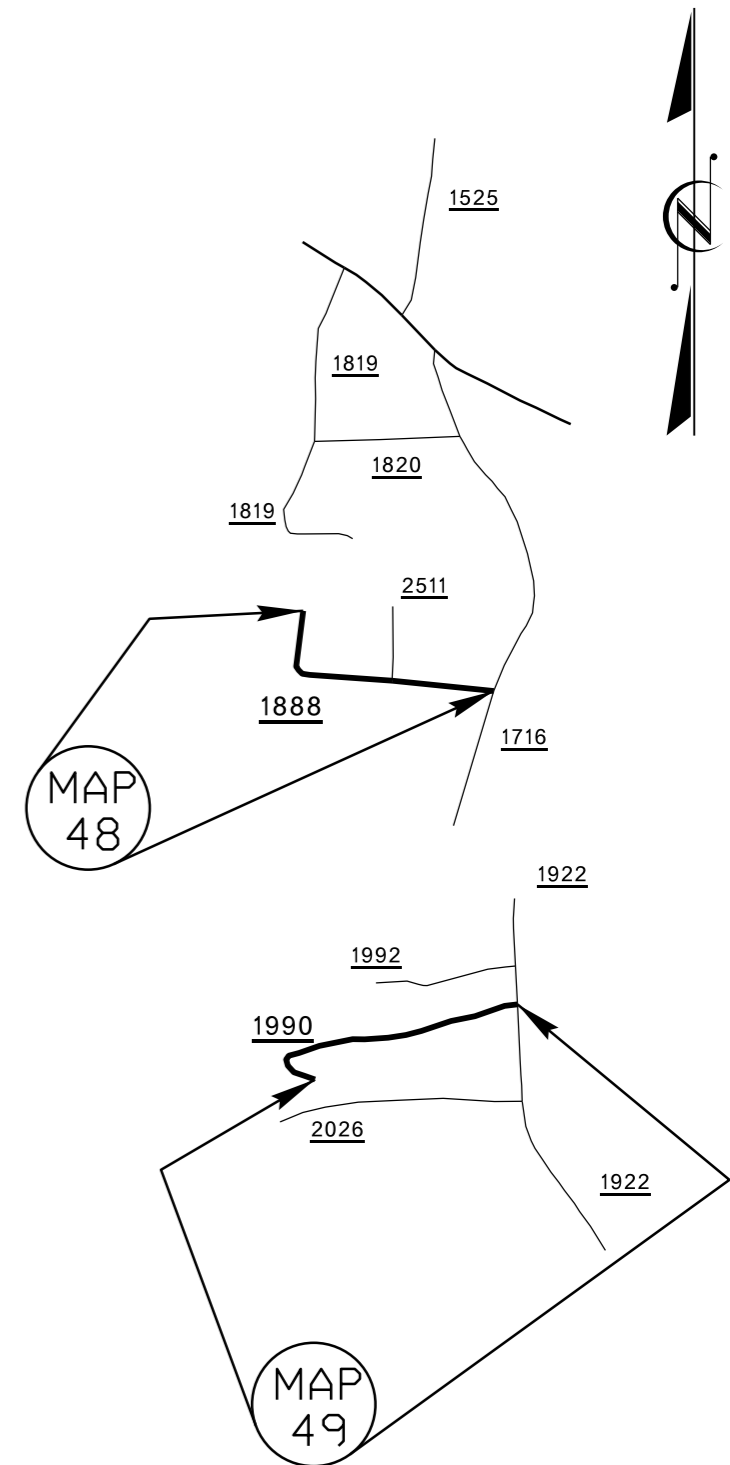
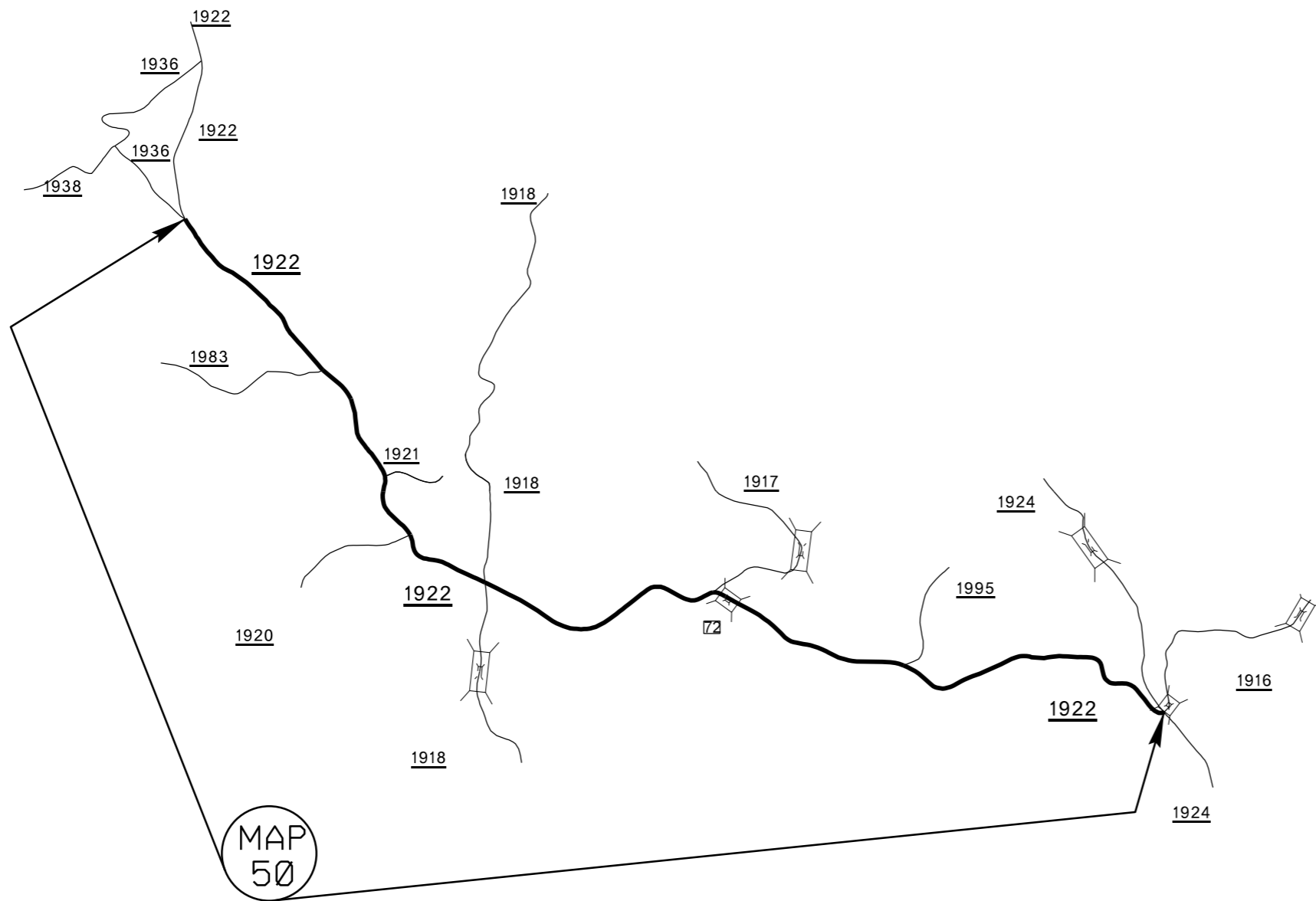
**BURKE COUNTY**

PROJECT NO.	SHEET NO.	TOTAL SHEETS
2022CPT.13.02.20121, 2022CPT.13.02.20122	4	12

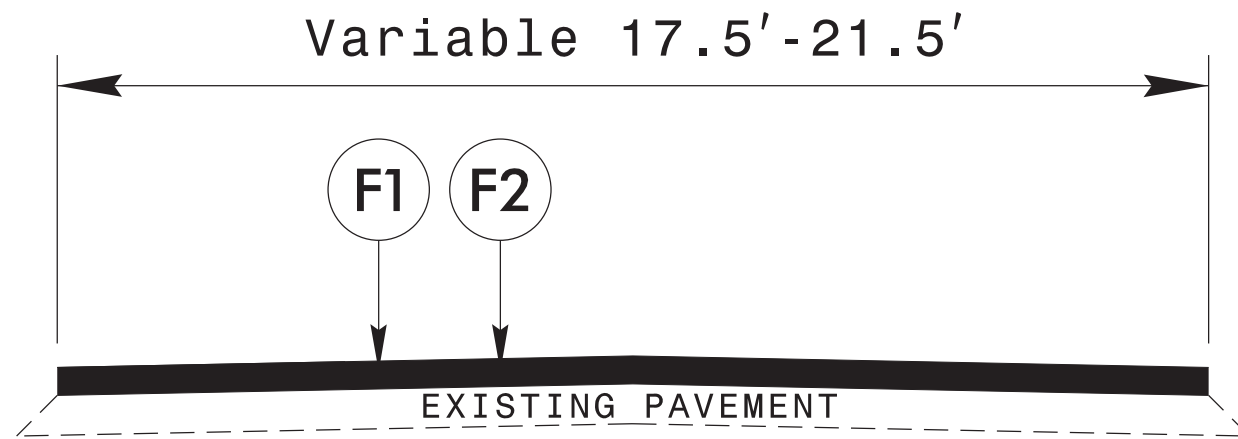


**BURKE COUNTY**

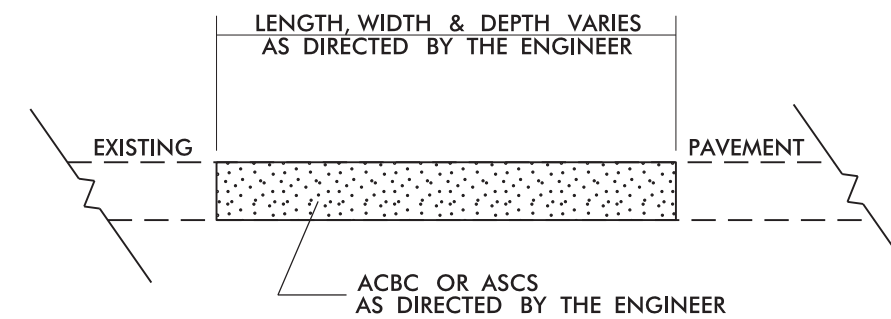
	<i>SHEET NO.</i>	<i>TOTAL SHEETS</i>
<i>2022CPT.13.02.20121, 2022CPT.13.02.20122</i>	<b>5</b>	<b>12</b>



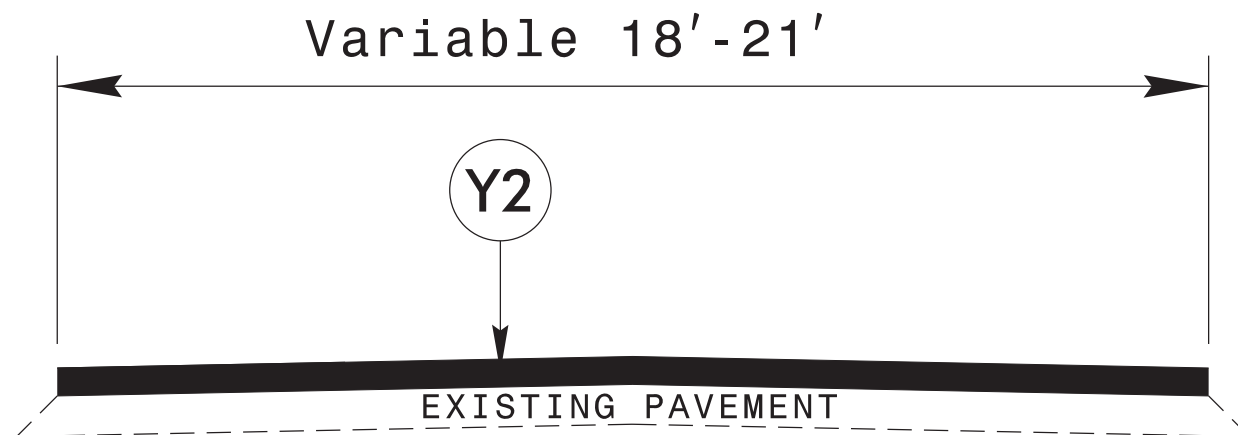
***BURKE COUNTY***



**TYPICAL SECTION #1**



**PATCHING EXISTING PAVEMENT**



**TYPICAL SECTION #2**

**PAVEMENT SCHEDULE**

F1	ASPHALT SURFACE TREATMENT, DOUBLE SEAL
F2	ASPHALT SURFACE TREATMENT, FOG SEAL
Y2	SEALING EXISTING PAVEMENT CRACKS

6/2/09

07-SEP-2021 07:34 S:\DDC\Resurfacing\2022 Resurfacing\District 1\Burke PP\Maps And Typical\2022\_Burke-ddc\_typicals.dgn

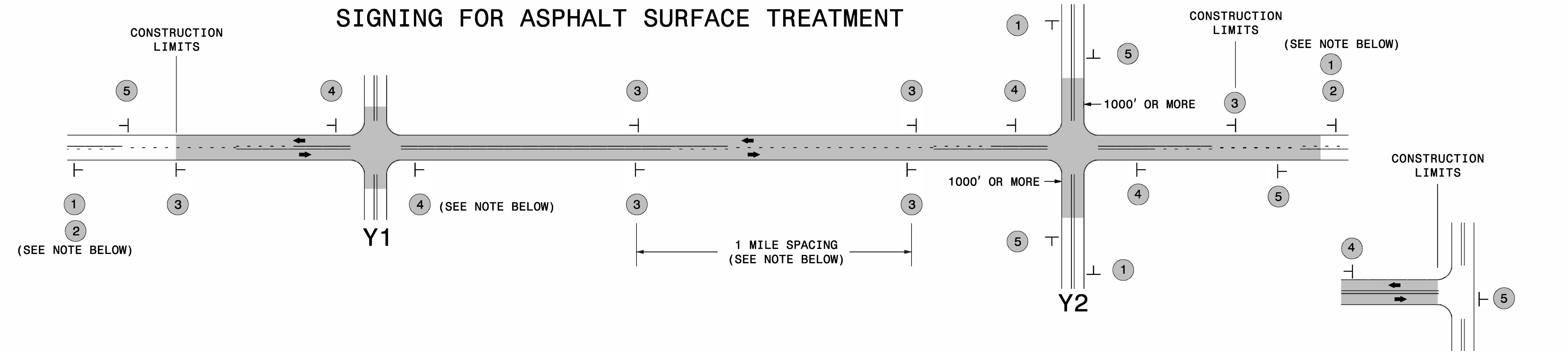
PROJECT NO.	SHEET NO.	TOTAL NO.
2022CPT.13.02.20121, 2022CPT.13.02.20122	7	12

### SUMMARY OF QUANTITIES

PROJECT NO	COUNTY	MAP NO	ROUTE	DESCRIPTION	TYP NO	LANES	LANE TYPE	FINAL SURFACE TESTING REQUIRED	WARM MIX ASPHALT REQUIRED	LENGTH	WIDTH	102200000-E	170400000-E	180350000-E	182000000-E	183800000-E	183850000-N		
												SEALING EXISTING PAVEMENT CRACKS	PATCHING EXISTING PAVEMENT	ASPHALT SURFACE TREATMENT, DOUBLE SEAL	ASPHALT SURFACE TREATMENT, FOG SEAL	EMULSION FOR ASPHALT SURFACE TREATMENT	VACUUM TRUCK		
												MI	FT	LB	TON	SY	SY	GAL	WK
2022CPT.13.02.20121	Burke	1	SR 1217 (HARBINSON DR)	FROM NC 181 TO END OF PAVMT (MP 0.00 - 0.26)	1	2	2WU	NO	NO	0.28	19.5		49						
2022CPT.13.02.20121	Burke	2	SR 1245 (DAIRY AVE)	FROM SR 1244 TO EOM (MP 0.00 - MP 0.33)	1	2	2WU	NO	NO	0.31	18		71						
2022CPT.13.02.20121	Burke	3	SR 1262 (SISK FARM RD)	FROM SR 1261 TO EOM (MP 0.00 - MP 0.32)	1	2	2WU	NO	NO	0.33	18.5		211						
2022CPT.13.02.20121	Burke	4	SR 1272 (DONALD BARRIER RD)	FROM B.R. PARKWAY TO END OF PAVMT (MP 0.16 - MP 0.37)	1	2	2WU	NO	NO	0.24	18		84						
2022CPT.13.02.20121	Burke	5	SR 1287 (HUNTER ST)	FROM NC 126 TO EOM (MP 0.00 - MP 0.12)	1	2	2WU	NO	NO	0.12	19		10						
2022CPT.13.02.20121	Burke	6	SR 1307 (JIM WALL ST)	FROM NC 126 TO EOM (MP 0.00 - MP 0.18)	1	2	2WU	NO	NO	0.19	18		49						
2022CPT.13.02.20121	Burke	7	SR 1408 (GLEN POWELL AVE)	FROM NC 181 TO EOM (MP 0.00 - MP 0.28)	1	2	2WU	NO	NO	0.27	17.5		40						
2022CPT.13.02.20121	Burke	8	SR 1409 (HARMON ST)	FROM NC 181 TO EOM (MP 0.00 - MP 0.44)	1	2	2WU	NO	NO	0.42	19		127						
2022CPT.13.02.20121	Burke	9	SR 1411 (ROY CALDWELL ST)	FROM SR 1412 TO EOM (MP 0.00 - MP 0.50)	1	2	2WU	NO	NO	0.5	18.5		157						
2022CPT.13.02.20121	Burke	10	SR 1456 (ALLMAN ST)	FROM SR 1422 TO EOM (MP 0.00 - MP 0.09)	1	2	2WU	NO	NO	0.09	17		27						
2022CPT.13.02.20121	Burke	11	SR 1477 (SILVERBROOK DR)	FROM SR 1440 TO DEAD END (MP 0.00 - MP 0.50)	1	2	2WU	NO	NO	0.49	20.5		49						
2022CPT.13.02.20121	Burke	12	SR 1747 (CUB CREEK ST)	FROM SR 1746 TO EOM (MP 0.00 - MP 0.40)	1	2	2WU	NO	NO	0.35	18.5		201						
2022CPT.13.02.20121	Burke	13	SR 1756 (COTTON MILL ST)	FROM SR 1757 TO END OF PAVMT (MP 0.00 - MP 0.18)	1	2	2WU	NO	NO	0.14	18		78						
2022CPT.13.02.20121	Burke	14	SR 1757 (OLD BLUE RIDGE)	FROM SR 1756 TO DEAD END (MP 0.00 - MP 0.21)	1	2	2WU	NO	NO	0.4	19.5		196						
2022CPT.13.02.20121	Burke	15	SR 1758 (BEREA CHURCH RD)	FROM SR 1660 TO SR 1762 (MP 0.00 - MP 1.26)	1	2	2WU	NO	NO	1.18	21.5		388						
2022CPT.13.02.20121	Burke	16	SR 1760 (ICARD DAIRY BARN RD)	FROM SR 1786 TO SR 1837 (MP 0.00 - MP 0.56)	1	2	2WU	NO	NO	0.54	20		276						
2022CPT.13.02.20121	Burke	17	SR 1765 (BERRY RD)	FROM US 70 TO SR 1761 (MP 0.00 - MP 0.81)	1	2	2WU	NO	NO	0.75	20.5		229						
2022CPT.13.02.20121	Burke	18	SR 1818 (CAROLINA MILL RD)	FROM SR 1803 TO SR 1803 (MP 0.00 - MP 0.99)	1	2	2WU	NO	NO	0.96	20.5		12						
2022CPT.13.02.20121	Burke	19	SR 1843 (JACUMIN RD)	FROM SR 1726 TO SR 1737 (MP 0.00 - MP 1.74)	1	2	2WU	NO	NO	1.65	20.5		341						
2022CPT.13.02.20121	Burke	20	SR 1847 (MANUAL AVE)	FROM SR 1786 TO EOM (MP 0.00 - MP 0.20)	1	2	2WU	NO	NO	0.22	18		68						
2022CPT.13.02.20121	Burke	21	SR 1868 (WHITENER DR)	FROM SR1780 TO EOM (MP 0.00 - MP 0.31)	1	2	2WU	NO	NO	0.31	18		49						
<b>TOTAL FOR PROJ NO. 2022CPT.13.02.20121</b>												<b>9.74</b>	<b>2,712</b>						
2022CPT.13.02.20122	Burke	22	SR 1217 (HARBINSON DR)	FROM NC 181 TO END OF PAVMT. (MP 0.00 - 0.26)	1	2		NO	NO	0.28	19.5			3,239	3,239	1,944			
2022CPT.13.02.20122	Burke	23	SR 1245 (DAIRY AVE)	FROM SR 1244 TO EOM (MP 0.00 - MP 0.33)	1	2	2WU	NO	NO	0.31	18			3,300	3,300	1,980			
2022CPT.13.02.20122	Burke	24	SR 1262 (SISK FARM RD)	FROM SR 1261 TO EOM (MP 0.00 - MP 0.32)	1	2	2WU	NO	NO	0.33	18.5			3,610	3,610	2,166			
2022CPT.13.02.20122	Burke	25	SR 1272 (DONALD BARRIER RD)	FROM B.R. PARKWAY TO END OF PAVMT (MP 0.16 - MP 0.37)	1	2	2WU	NO	NO	0.23	18			2,486	2,486	1,492			
2022CPT.13.02.20122	Burke	26	SR 1287 (HUNTER ST)	FROM NC 126 TO EOM (MP 0.00 - MP 0.12)	1	2	2WU	NO	NO	0.12	19			1,338	1,338	803			
2022CPT.13.02.20122	Burke	27	SR 1307 (JIM WALL ST)	FROM NC 126 TO EOM (MP 0.00 - MP 0.18)	1	2	2WU	NO	NO	0.19	18			2,036	2,036	1,222			
2022CPT.13.02.20122	Burke	28	SR 1408 (GLEN POWELL AVE)	FROM NC 181 TO EOM (MP 0.00 - MP 0.28)	1	2	2WU	NO	NO	0.27	17			2,738	2,738	1,643			
2022CPT.13.02.20122	Burke	29	SR 1409 (HARMON ST)	FROM NC 181 TO EOM (MP 0.00 - MP 0.44)	1	2	2WU	NO	NO	0.42	19			4,704	4,704	2,822			
2022CPT.13.02.20122	Burke	30	SR 1411 (ROY CALDWELL ST)	FROM SR 1412 TO EOM (MP 0.00 - MP 0.50)	1	2	2WU	NO	NO	0.5	18.5			5,456	5,456	3,274			
2022CPT.13.02.20122	Burke	31	SR 1456 (ALLMAN ST)	FROM SR 1422 TO EOM (MP 0.00 - MP 0.09)	1	2	2WU	NO	NO	0.09	17			898	898	539			
2022CPT.13.02.20122	Burke	32	SR 1477 (SILVERBROOK DR)	FROM SR 1440 TO DEAD END (MP 0.00 - MP 0.50)	1	2	2WU	NO	NO	0.49	20.5			5,928	5,928	3,557			
2022CPT.13.02.20122	Burke	33	SR 1747 (CUB CREEK ST)	FROM SR 1746 TO EOM (MP 0.00 - MP 0.40)	1	2	2WU	NO	NO	0.35	18.5			3,844	3,844	2,306			
2022CPT.13.02.20122	Burke	34	SR 1756 (COTTON MILL ST)	FROM SR 1757 TO END OF PAVMT (MP 0.00 - MP 0.18)	1	2	2WU	NO	NO	0.14	18			1,478	1,478	887			
2022CPT.13.02.20122	Burke	35	SR 1757 (OLD BLUE RIDGE)	FROM SR 1756 TO DEAD END (MP 0.00 - MP 0.21)	1	2	2WU	NO	NO	0.4	19.5			4,576	4,576	2,746			
2022CPT.13.02.20122	Burke	36	SR 1758 (BEREA CHURCH RD)	FROM SR 1660 TO SR 1762 (MP 0.00 - MP 1.26)	1	2	2WU	NO	NO	1.18	21.5			15,391	15,391	9,235			
2022CPT.13.02.20122	Burke	37	SR 1760 (ICARD DAIRY BARN RD)	FROM SR 1786 TO SR 1837 (MP 0.00 - MP 0.56)	1	2	2WU	NO	NO	0.54	20			6,798	6,798	4,079			
2022CPT.13.02.20122	Burke	38	SR 1765 (BERRY RD)	FROM US 70 TO SR 1761 (MP 0.00 - MP 0.81)	1	2	2WU	NO	NO	0.75	20.5			9,861	9,861	5,916			
2022CPT.13.02.20122	Burke	39	SR 1818 (CAROLINA MILL RD)	FROM SR 1803 TO SR 1803 (MP 0.00 - MP 0.99)	1	2	2WU	NO	NO	0.96	20.5			11,605	11,605	6,963			
2022CPT.13.02.20122	Burke	40	SR 1843 (JACUMIN RD)	FROM SR 1726 TO SR 1737 (MP 0.00 - MP 1.74)	1	2	2WU	NO	NO	1.65	20.5			19,913	19,913	11,948			
2022CPT.13.02.20122	Burke	41	SR 1847 (MANUAL AVE)	FROM SR 1786 TO EOM (MP 0.00 - MP 0.20)	1	2	2WU	NO	NO	0.22	18			2,323	2,323	1,394			
2022CPT.13.02.20122	Burke	42	SR 1868 (WHITENER DR)	FROM SR1780 TO EOM (MP 0.00 - MP 0.31)	1	2	2WU	NO	NO	0.31	18			3,320	3,320	1,992			
2022CPT.13.02.20122	Burke	43	SR 1424 (JOHN RIVER RD)	FROM SR 1405 TO SR 1438 (MP 0.00 - MP 5.01)	2	2	2WU	NO	NO	4.95	20	16,087.50							
2022CPT.13.02.20122	Burke	44	SR 1525 (MOUNTAIN VIEW DR)	FROM SR 1522 TO US 70 (MP 1.24 - MP 2.99)	2	2	2WU	NO	NO	1.75	20	5,687.50							
2022CPT.13.02.20122	Burke	45	SR 1531 (NORTH DREXEL RD)	FROM NC 114 TO SR 1512 (MP 0.00 - MP 1.20)	2	2	2WU	NO	NO	1.2	20	3,900.00							
2022CPT.13.02.20122	Burke	46	SR 1713 (SUMMERS RD)	FROM US 70 TO NC 114 (MP 0.00 - MP 2.79)	2	2	2WU	NO	NO	2.79	20	9,067.50							
2022CPT.13.02.20122	Burke	47	SR 1858 (JOHN ABEE ST)	FROM NC 18 TO DEAD END (MP 0.00 - MP 0.20)	2	2	2WU	NO	NO	0.2	18	650.00							
2022CPT.13.02.20122	Burke	48	SR 1888 (MCNEELLY DRIVE)	FROM SR 1716 TO END MAINT (MP 0.11 - MP 0.30)	2	2	2WU	NO	NO	0.19	18	617.50							
2022CPT.13.02.20122	Burke	49	SR 1990 (STAMEY AVE)	FROM SR 1922 TO END OF PAVMT (MP 0.00 - MP 0.35)	2	2	2WU	NO	NO	0.35	18	1,137.50							
2022CPT.13.02.20122	Burke	50	SR 1922 (ENOLA ROAD)	FROM SR 1924 TO SR 1936 (MP 0.00 - MP 4.45)	2	2	2WU	NO	NO	4.45	20	14,462.50							
<b>TOTAL FOR PROJ NO. 2022CPT.13.02.20122</b>												<b>25.61</b>	<b>51,610.00</b>	<b>114,842</b>	<b>114,842</b>	<b>68,908</b>	<b>6.00</b>		
<b>GRAND TOTAL</b>												<b>35.35</b>	<b>51,610.00</b>	<b>2,712</b>	<b>114,842</b>	<b>114,842</b>	<b>68,908</b>	<b>6.00</b>	







**LEGEND**  
 ┆ STATIONARY SIGN  
 ← DIRECTION OF TRAFFIC FLOW

**MAINLINE (-L-) SIGNING**

**-Y- LINE SIGNING**

SIGNING NOTES AND PLACEMENT PER DIRECTION	1		PLACE 1000' PRIOR TO BEGINNING OF CONSTRUCTION LIMITS. ONLY USED ON -Y- LINES IF RESURFACING LIMITS EXTEND 1000' ALONG -Y- LINE.
	2		#2 SIGN ONLY USED WHEN RESURFACING LIMITS ARE 2 OR MORE MILES IN LENGTH. ROUND UP TO NEXT WHOLE NUMBER. (NO FRACTIONAL OR DECIMAL NUMBERS)
	3		<ul style="list-style-type: none"> <li>- ALTERNATE THE FOLLOWING TWO SIGNS:</li> <li>- STARTING WITH "LOOSE GRAVEL" (W8-7) FOLLOWED BY "UNMARKED PAVEMENT".</li> <li>- PLACE INITIALLY AT THE CONSTRUCTION LIMITS AND SPACED 1 MILE APART THEREAFTER.</li> <li>- AT TEE INTERSECTIONS INSTALL INITIALLY 0.5 MILE FROM INTERSECTION AND SPACE 1 MILE APART THEREAFTER.</li> </ul>
	4		<ul style="list-style-type: none"> <li>- THESE ARE FOR -Y- LINES THAT ARE "THROUGH" ROADWAYS.</li> <li>- DEAD END AND SUBDIVISION ROADS ARE NOT "THROUGH" ROADWAYS.</li> <li>- INSTALL 500' +/- FROM EACH -Y- LINE APPROACH AS SHOWN ABOVE.</li> <li>- FOR MULTIPLE -Y- LINES THAT ARE SEPARATED BY 0.25 MILES OR LESS, TREAT AS A SINGLE UNIT AND INSTALL WITHIN 500' OF EACH APPROACH.</li> <li>- A MAXIMUM OF 2 SIGN SETS PER MILE. DO NOT INSTALL WHEN -Y- LINES ARE WITHIN 0.5 MILES FROM "END ROAD WORK" SIGN.</li> <li>- FOR TEE INTERSECTIONS, INSTALL WITHIN 500' +/- OF THE INTERSECTION ALONG -L- LINE.</li> </ul>
	5		PLACE 500' FOLLOWING THE END OF CONSTRUCTION LIMITS OR AS SHOWN WHEN WORK ENDS AT A 3-WAY TEE INTERSECTION.

**NO REQUIRED STATIONARY SIGNING FOR THE FOLLOWING -Y- LINE CONDITIONS:**

- 1) LESS THAN 1000' OF RESURFACING ALONG -Y- LINE
- 2) SUBDIVISION ROADS
- 3) DEAD END ROADS

WHEN PAVING/CONSTRUCTION ACTIVITIES PROCEED ACROSS AN UNSIGNED -Y- LINE, ADVANCE WARNING PORTABLE SIGNS SHALL BE USED ALONG THE -Y- LINE AS SHOWN BELOW. REMOVE UPON COMPLETION OF WORK.

W20-1  
48" X 48"

W20-7 A  
48" X 48"

PLACED 500' IN ADVANCE OF FLAGGER. PLACED 250' IN ADVANCE OF FLAGGER.

**ADVANCE WARNING SIGNS FOR ASPHALT SURFACE TREATMENTS 2 LANE ROADWAYS**

SIGN NUMBER: 11299

TYPE: B

QUANTITY: SEE PLANS

SIGN WIDTH: 5'-6"

HEIGHT: 5'-6"

TOTAL AREA: 30.5 Sq.Ft.

BORDER TYPE: INSET

RECESS: 0.59"

WIDTH: 0.75"

RADII: 1.38"

NO. Z BARS: N/A

LENGTH: N/A

BACKG COLOR: Fluorescent Orange

COPY COLOR: Black

SYMBOL	X	Y	WID	HT

MAT'L: 0.125" (3.2 mm) ALUMINUM

DESIGN BY: WJ

PROJECT ID: ALL

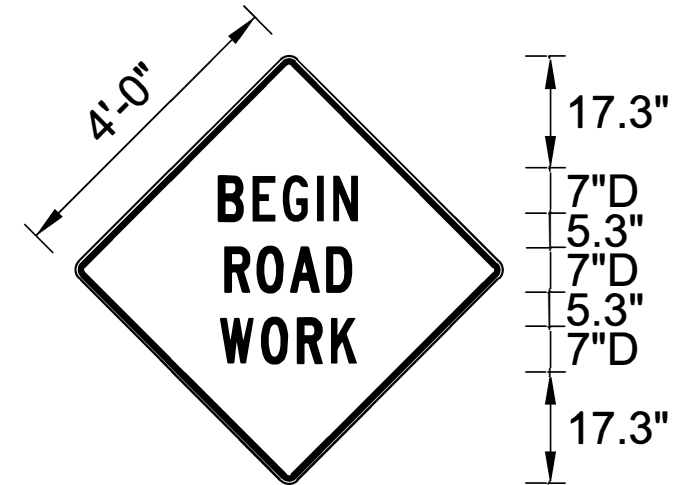
CHECKED BY:

DIV: ALL

DATE: Jun 22, 2011

# SP 11299

PROJECT NO.	SHEET NO.	TOTAL NO.
2022CPT.13.02.20121, 2022CPT.13.02.20122	10	12



BORDER  
R=1.38"  
TH=0.75"  
IN=0.59"

Spacing Factor is 1 unless specified otherwise

### USE NOTES: 1,2

1. Legend and border shall be direct applied black non-reflective sheeting.
2. Background shall be Type VII, VIII, or IX (prismatic) fluorescent orange retroreflective sheeting.

### LETTER POSITIONS

Letter spacings are to start of next letter																				Series/Size	
																				Text Length	
		B	E	G	I	N															D 2000
	20.5	6	5.4	6.3	2.8	4.8	20.5														25.2
		R	O	A	D																D 2000
	21.4	5.8	5.9	7	4.8	21.4															23.5
		W	O	R	K																D 2000
	20.9	7.1	6.5	5.9	4.9	20.9															24.5

SIGN NUMBER: SP13106  
 TYPE: STATIONARY  
 QUANTITY: SEE PLANS

BACKG COLOR: Fluorescent Orange  
 COPY COLOR: Black

DESIGN BY: B. RASHID  
 PROJECT ID:

CHECKED BY: AIA  
 DIV:

DATE: Apr 26, 2013

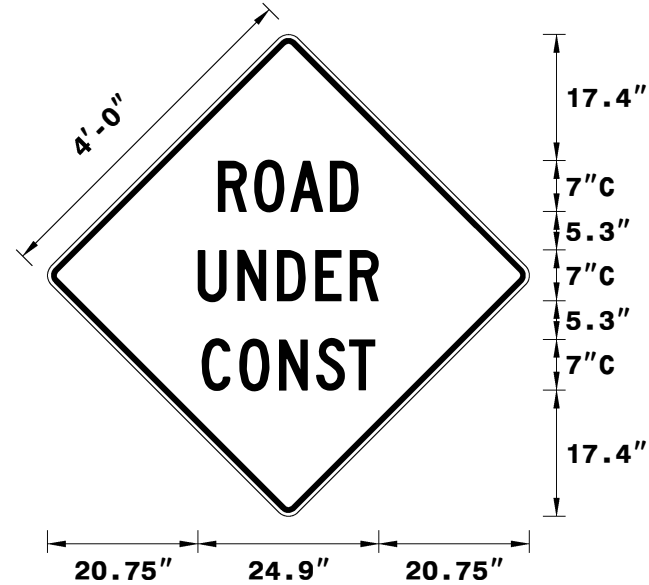
SYMBOL	X	Y	WID	HT

MAT'L: 0.080" (2.0 mm) ALUMINUM

BORDER TYPE: INSET  
 RECESS: 0.75"  
 WIDTH: 1.25"  
 RADII: 3"

NO. Z BARS:  
 LENGTH:

PROJECT NO.	SHEET NO.	TOTAL NO.
2012CPT.13.02.20121, 2012CPT.13.02.20122	11	12



Spacing Factor is 1 unless specified otherwise

USE NOTES: 1,2

- Legend and border shall be direct applied black non-reflective sheeting.
- Background shall be NC GRADE B fluorescent orange retroreflective sheeting.

LETTER POSITIONS

Letter spacings are to start of next letter

Letter spacings are to start of next letter																	Series/Size	
																	Text Length	
		R	O	A	D													C 2000
23.5	5	5	5.5	3.9	23.5													19.3
		U	N	D	E	R												C 2000
20.7	5.5	5.5	5.3	4.8	3.9	20.7												24.9
		C	O	N	S	T												C 2000
21.2	5.2	5.5	5.1	4.6	3.6	21.2												23.9

SIGN NUMBER: SP13107  
 TYPE: STATIONARY  
 QUANTITY: SEE PLANS

BACKG COLOR: Fluorescent Orange  
 COPY COLOR: Black

DESIGN BY: B. RASHID  
 PROJECT ID:

CHECKED BY: AIA  
 DIV:

DATE: Apr 26, 2013

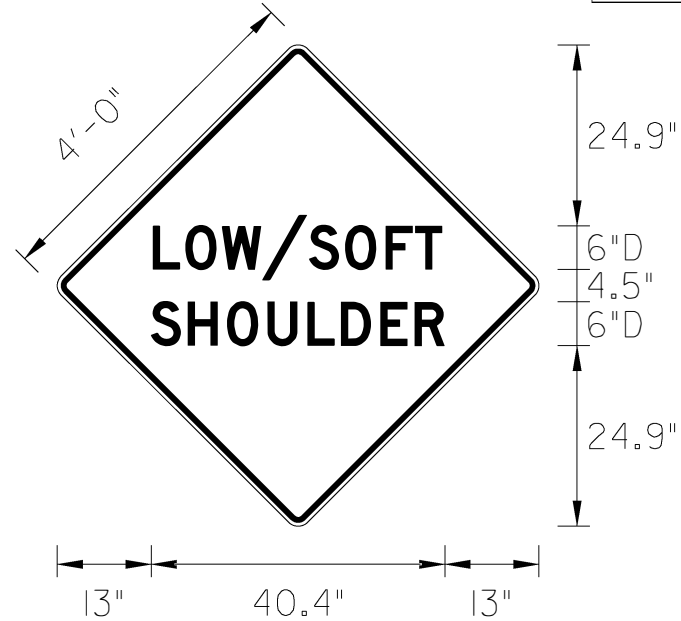
SYMBOL	X	Y	WID	HT

MAT'L: 0.080" (2.0 mm) ALUMINUM

BORDER TYPE: INSET  
 RECESS: 0.75"  
 WIDTH: 1.25"  
 RADII: 3"

NO. Z BARS:  
 LENGTH:

PROJECT NO.	SHEET NO.	TOTAL NO.
2022CPT.13.02.20121, 2022CPT.13.02.20122	12	12



Spacing Factor is 1 unless specified otherwise

USE NOTES: 1,2

- Legend and border shall be direct applied black non-reflective sheeting.
- Background shall be NC GRADE B fluorescent orange retroreflective sheeting.

LETTER POSITIONS

Letter spacings are to start of next letter											Series/Size
											Text Length
	L	O	W	/	S	O	F	T			D 2000
13.2	4.5	5	5.5	6.5	5	5.6	4.1	3.7	13.2		39.9
	S	H	O	U	L	D	E	R			D 2000
13	5.1	5.4	5.6	5.5	4.6	5.4	4.7	4.1	13		40.4